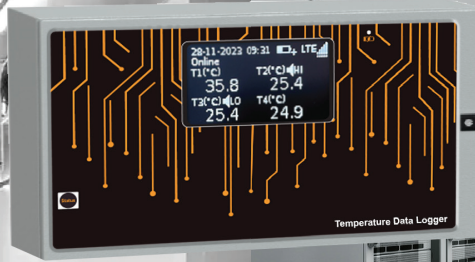


16 Channel Temperature Data Logger for Live Monitoring with Mobile Apps, Alerts & Analytics

Model
IBI-MT16Ch



Specifications

IBI-MT16Ch - 16 Channel RTD Temperature Data Logger

| | | |
|-----------------------------|-----|--|
| Input | RTD | PT100 2/3/4 Wire PT1000 2/3/4 Wire (Optional) |
| Temperature Measuring Range | | PT100 : -200°C to 550°C PT1000 : -200°C to 550°C (Optional) |
| Power Supply | | DC 5V/1A |
| Accuracy | | 0.5°C (0.05% of Full Scale) |

Hardware Features

- 2.4" 128X64 OLED monochrome Graphical Display
- Internal Li-Ion 8000 mAh battery with under/over voltage protection, up to 18 Hrs battery back-up during power failure
- Plug & Play Device
- Parameters can Configured using Smart Phone or Laptop Over Wi-Fi by Connecting to Data Logger
- 4G LTE CAT1 Technology with In-built M2M SIM
- 40,000 Records can be Stored in Memory in case of Network Failure
- Internal Buzzer to Indicate High or Low Alarm

Note: RTD Sensors not included with Data Logger, which need to purchase separately. RTD Sensor cable length can be customized, Extra charges applicable

Software Features

- Pharma, Chemical & Laboratory Equipment Monitoring application
- Different Views (Dashboard / Map / List), Analytics, Device Management, User Management, Alerts Management, Maintenance Schedules & Ticket Management
- Custom Reports (21CFR Part 11 Compliance) PDF, CSV, Excel
- MKT Value, Audit Trail, Alarm Log, Trend Graphs
- Alerts, Push Notifications & SMS (Optional)
- Web & Mobile Apps (iOS & Android)



www.ideabytesiot.com
vinay.bandela@ideabytes.com

Call: 1800 571 5566

Ideabytes Software India Pvt Ltd, 11th floor, Unit 1, Kapil Towers, Financial District, Nanakaramguda, Hyderabad-500032, Telangana, India.